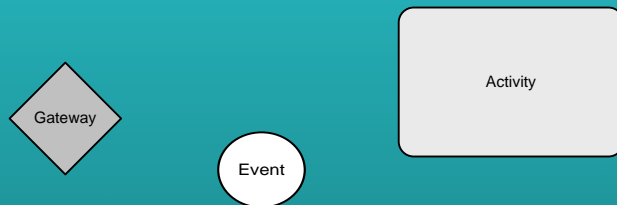
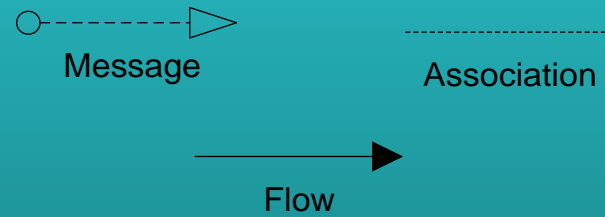


BPMN Main Elements

Flow Objects



Connections



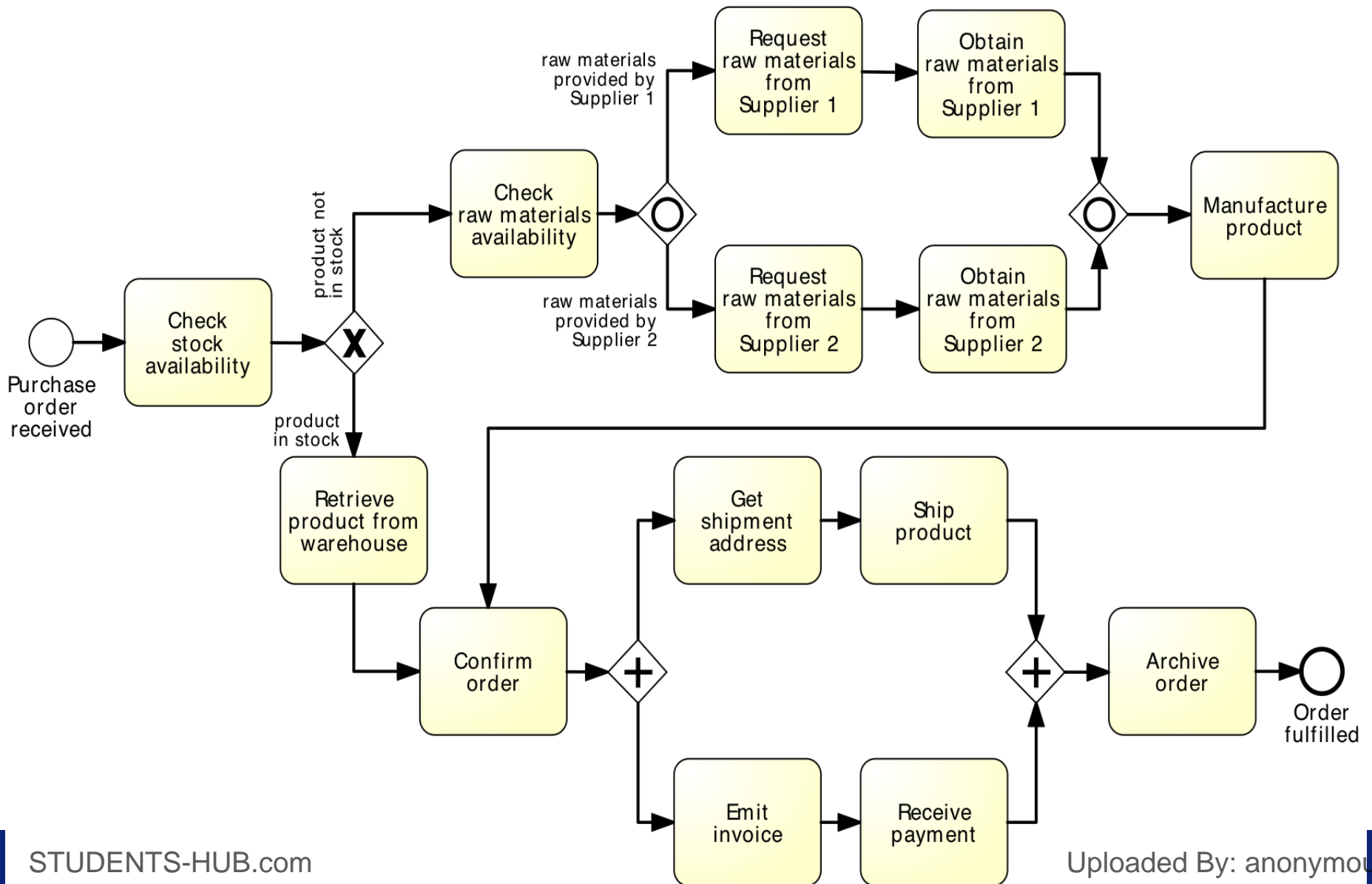
Pools & lanes



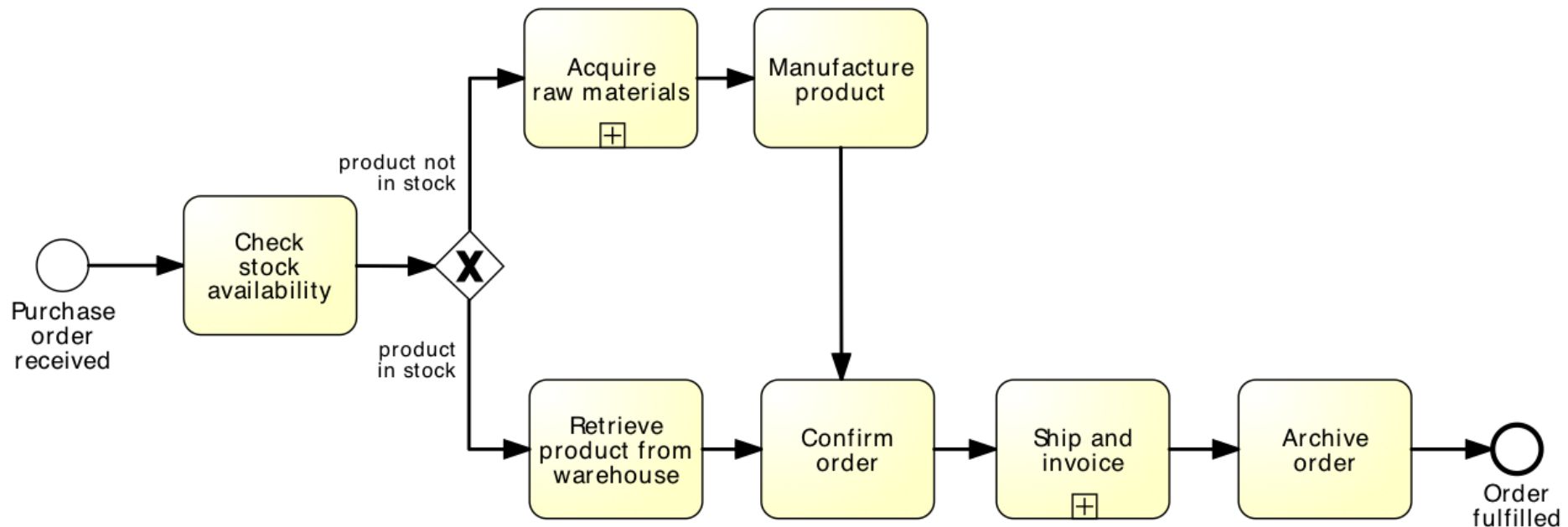
Artifacts



Anything wrong with this model?

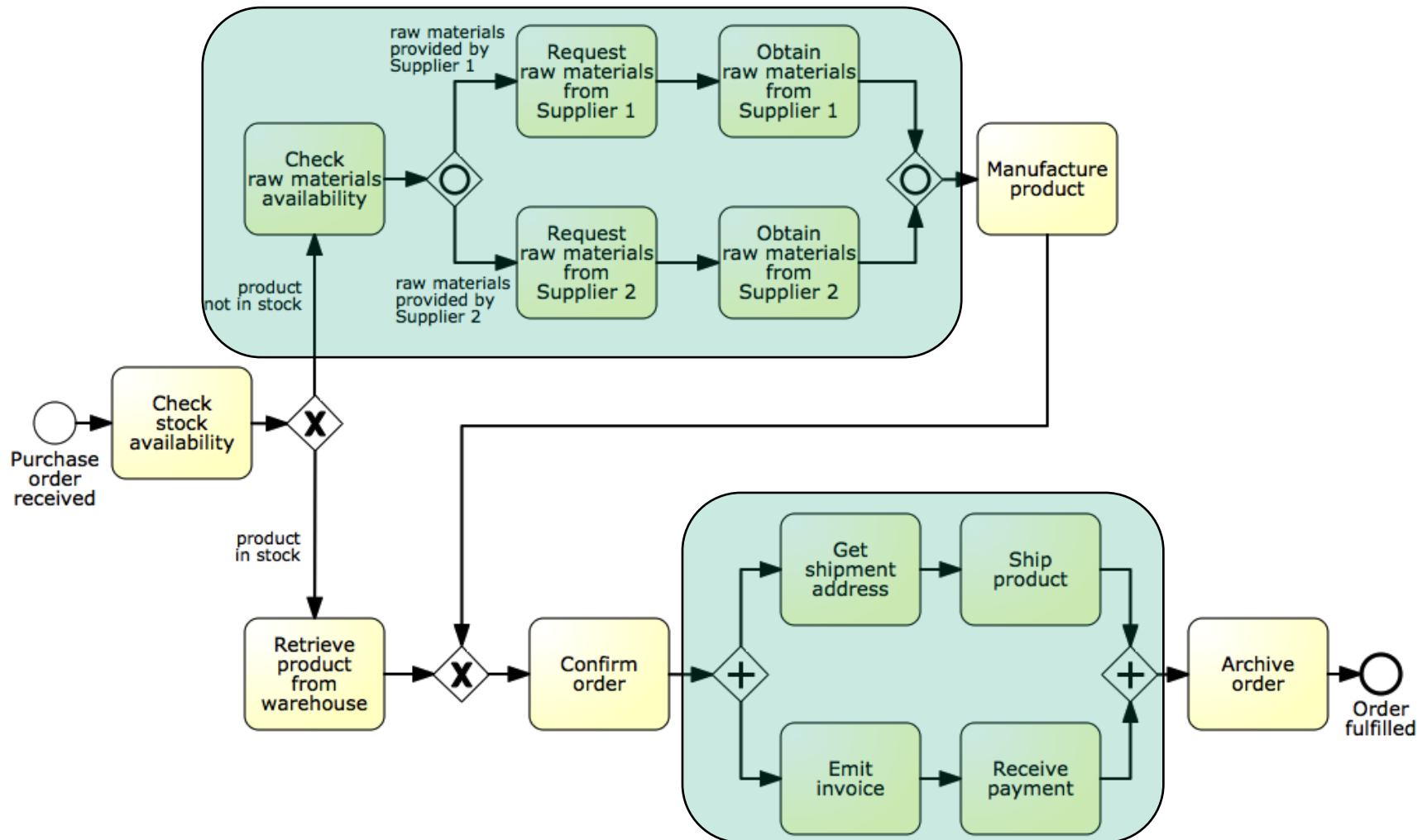


Is this better?



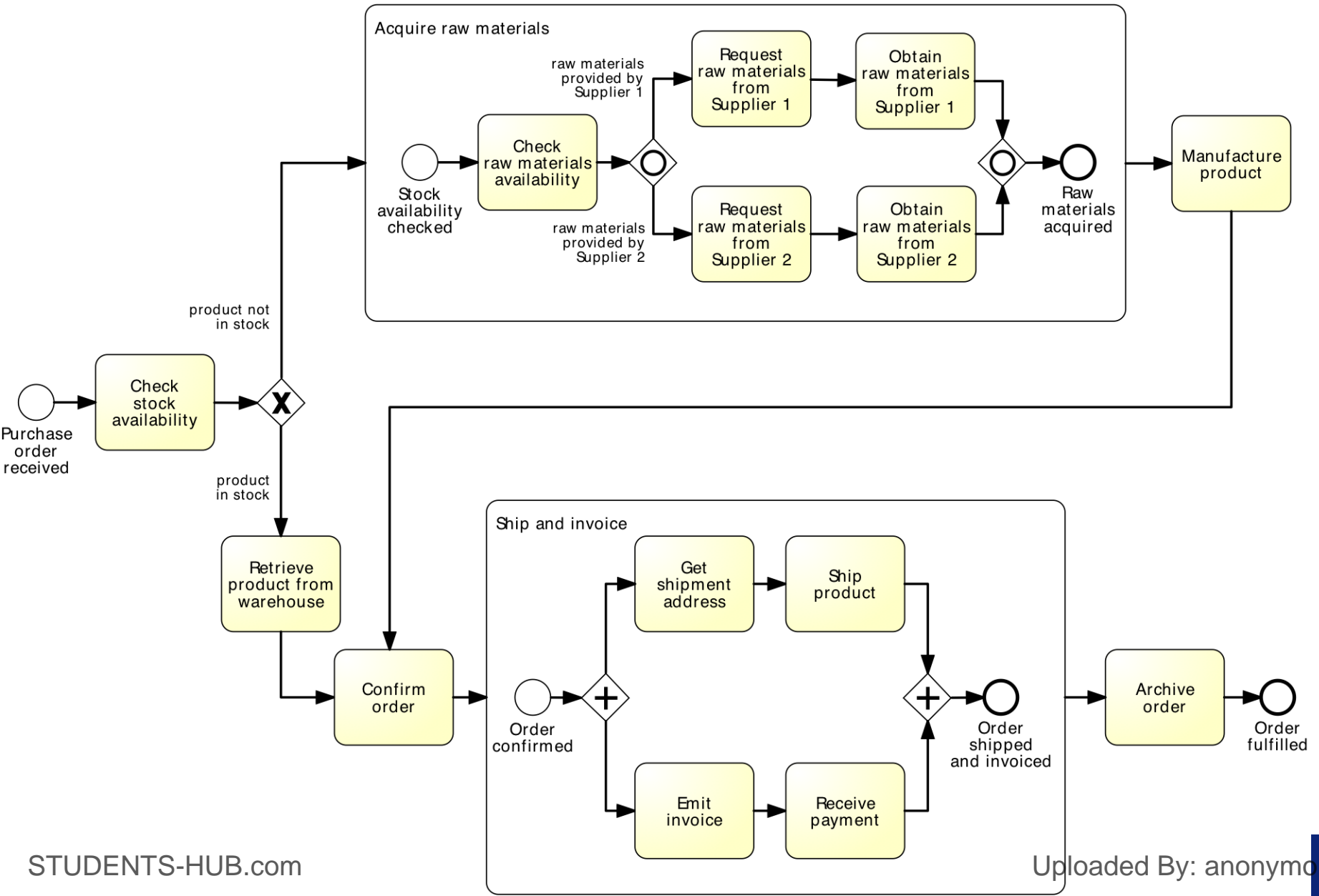
Identifying sub-processes

Acquire raw materials



Ship and invoice

Using the Expanded Sub-Process Notation



Organizational Elements in BPMN – Pools & Lanes

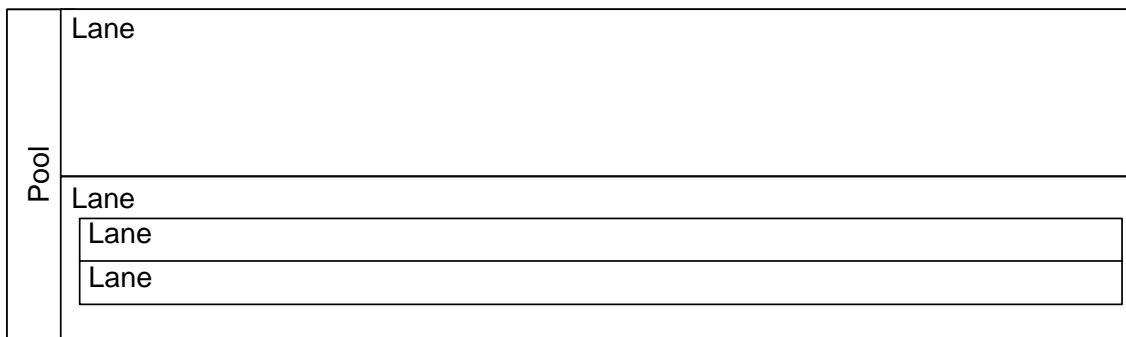
Pool

Generally used to model **a business party** (e.g. a whole company, customer, supplier, hospital, clinic, etc)

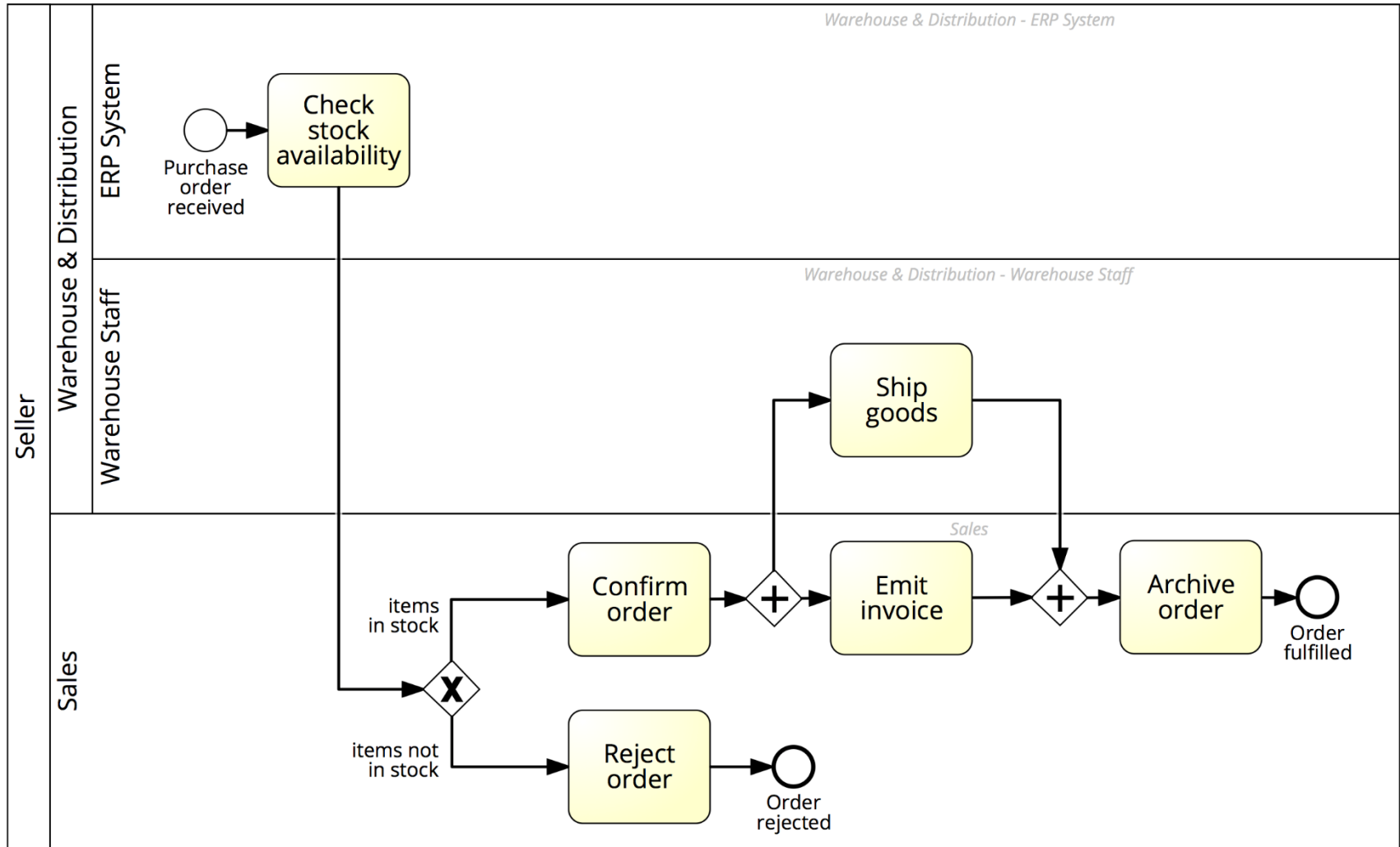


Lane

Generally used to model **departments** (e.g. shipping, finance, sales, marketing), **internal roles** (e.g. Clerk, Manager, Engineer), **software systems** (e.g. ERP, CRM)

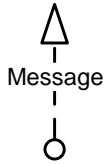


Order-to-cash process with lanes



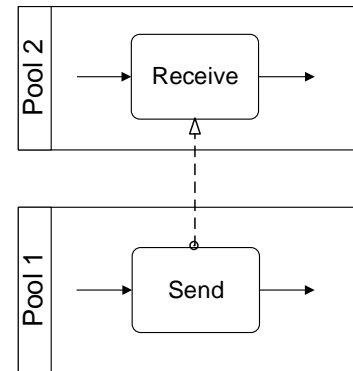
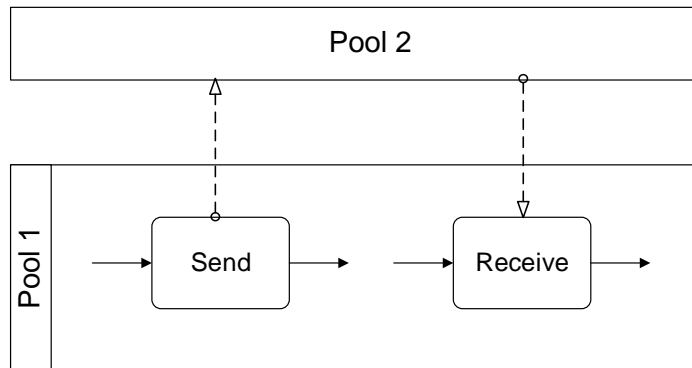
Message Flow

A *Message Flow* represents a flow of information between two process parties (Pools)

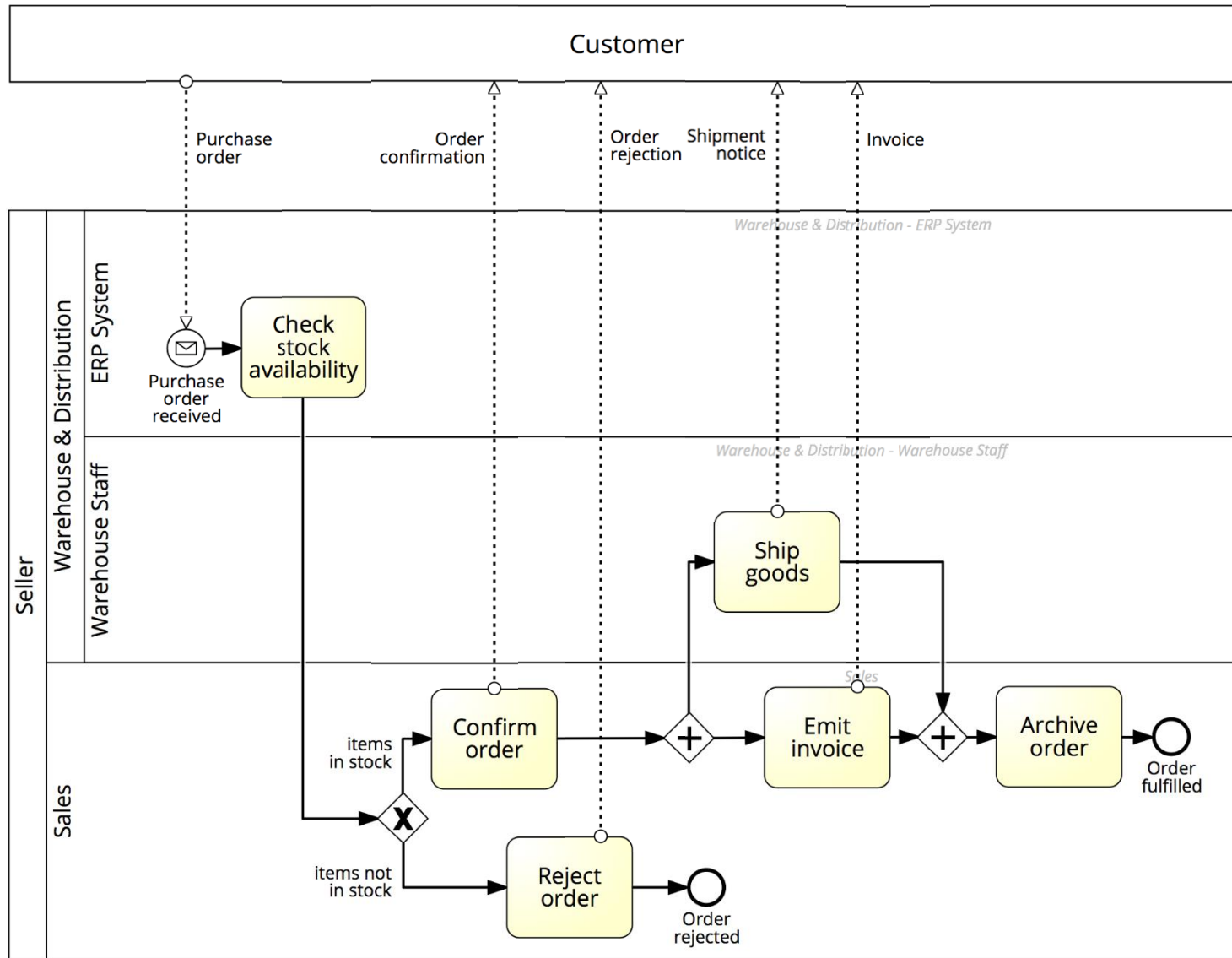


A Message Flow can connect:

- directly to the boundary of a Pool ➔ captures an *informative* message to/from that party
- to a specific activity or event within that Pool ➔ captures a message that triggers a specific activity/event within that party



Order-to-cash process with a black-box customer pool

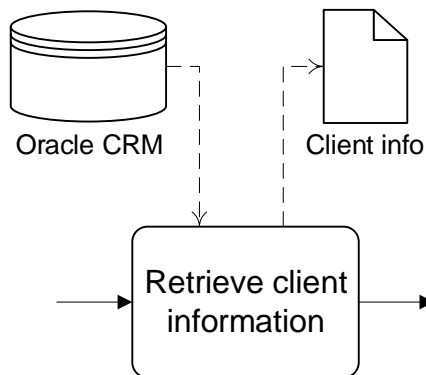
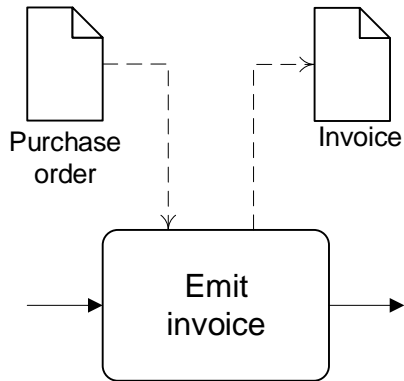


Question Black box or white box?

BPMN Information Artifacts

A *Data Object* captures an artifact required (input) or produced (output) by an activity.

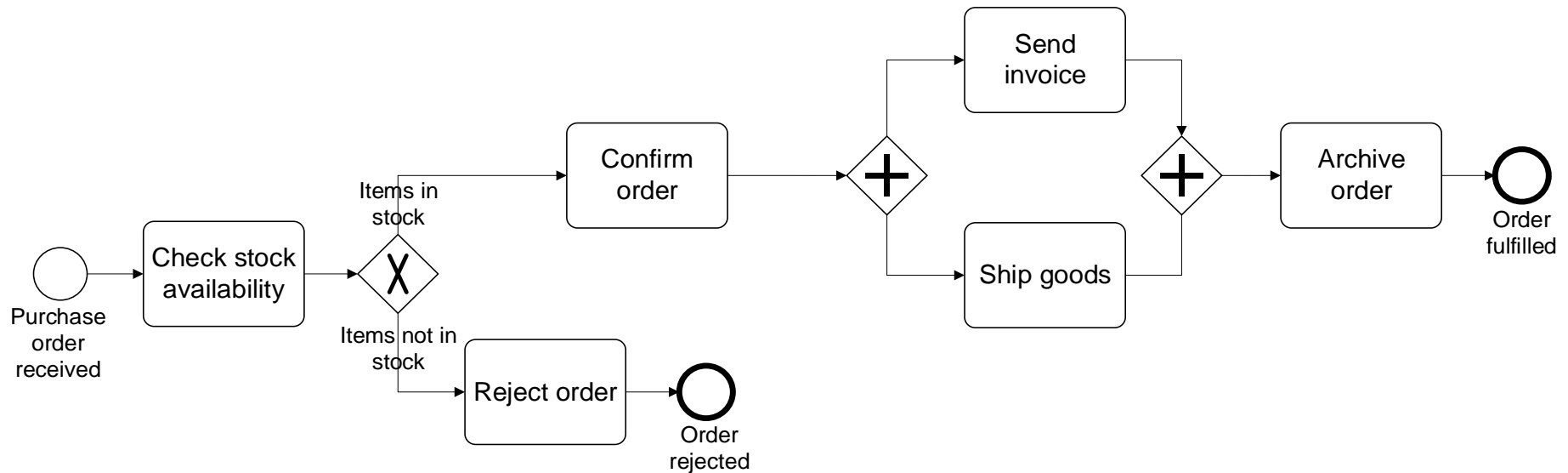
- Can be physical or electronic



A *Data Store* is a place containing data objects that must be persisted beyond the duration of a process instance.

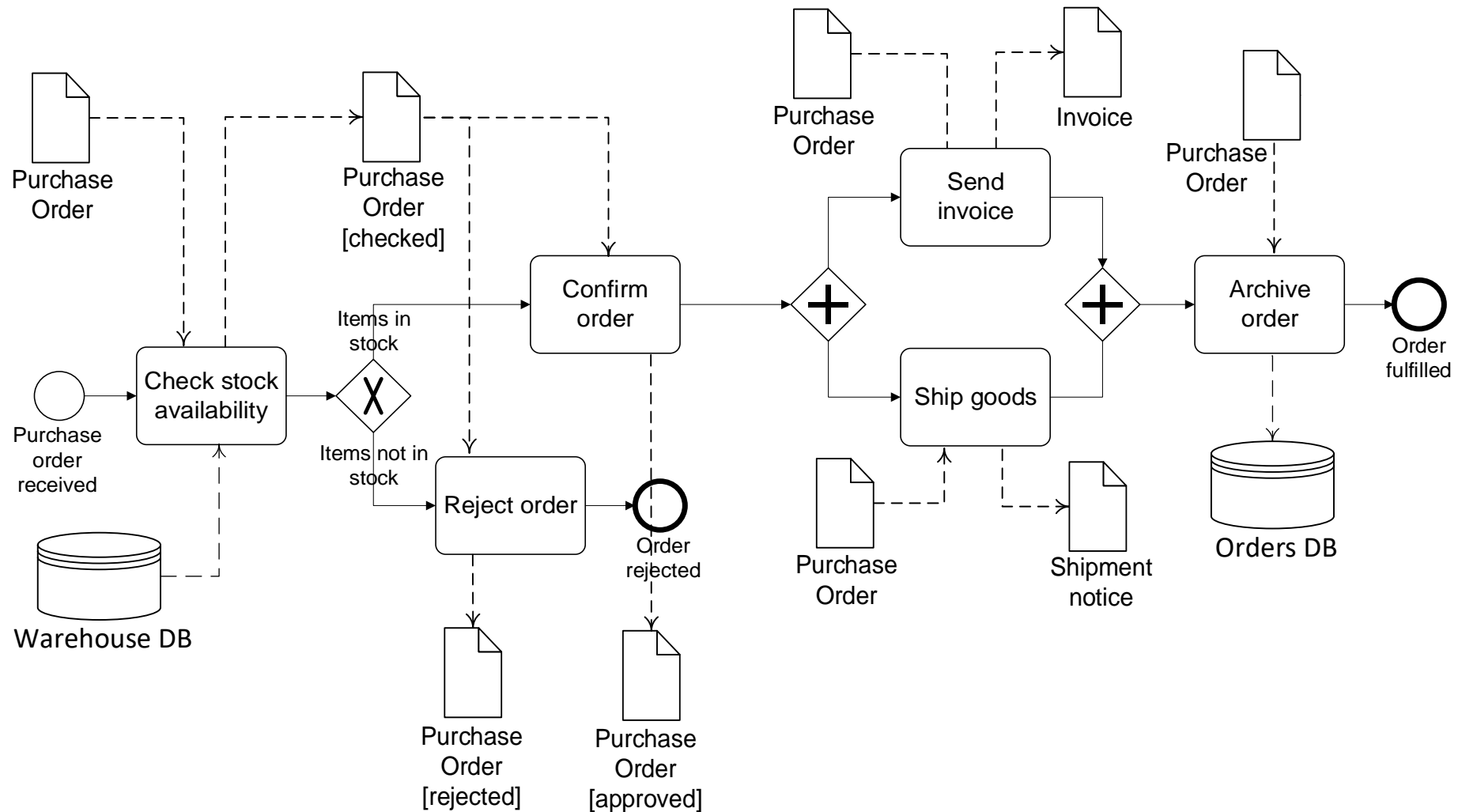
It is used by an activity to store (as output) or retrieve (as input) data objects.

Order-to-cash process, again



The purchase order document serves as an input to the stock availability check. Based on the outcome of this check, the status of the document is updated, either to “approved” or “rejected”. If the order is approved, an invoice and a shipment notice are produced.

Model with information artifacts



Beware: This diagram is a too detailed. It is for illustration purposes. In practice, try to only model the most important data objects and associations. Keep the model readable.

A Final Note: BPMN Text Annotations

A *Text Annotation* is a mechanism to provide additional text information to the model reader

- **Doesn't affect** the flow of tokens through the process

