



Faculty of Engineering and Technology

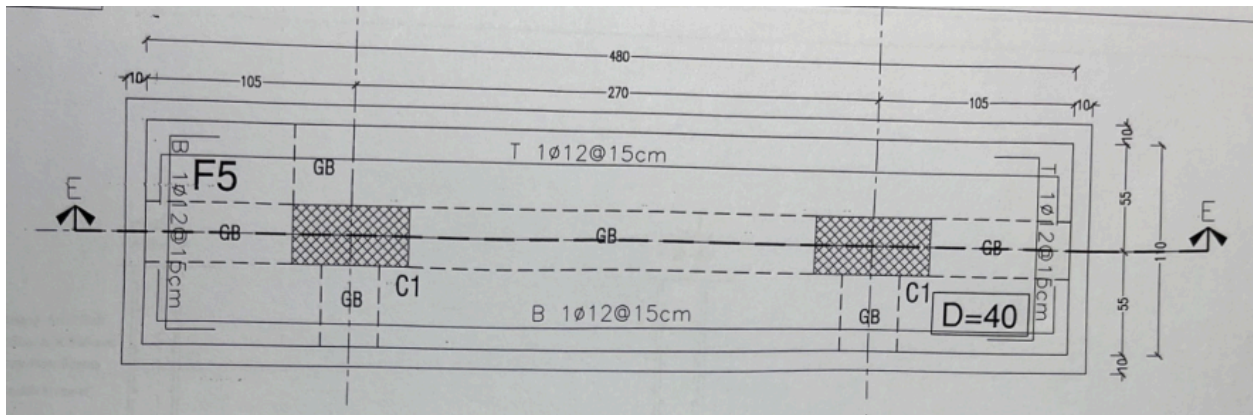
Civil and Environmental Engineering Department

Building Construction and Engineering drawing Lab (ENCE3190)

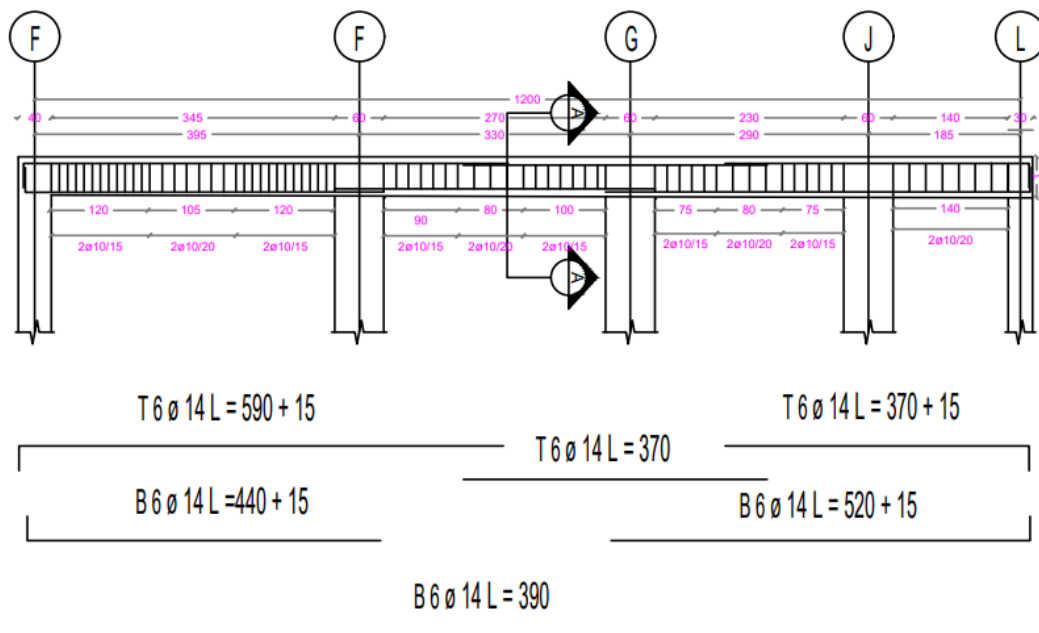
Final Exam (January, 2024)

Duration: 150 minutes

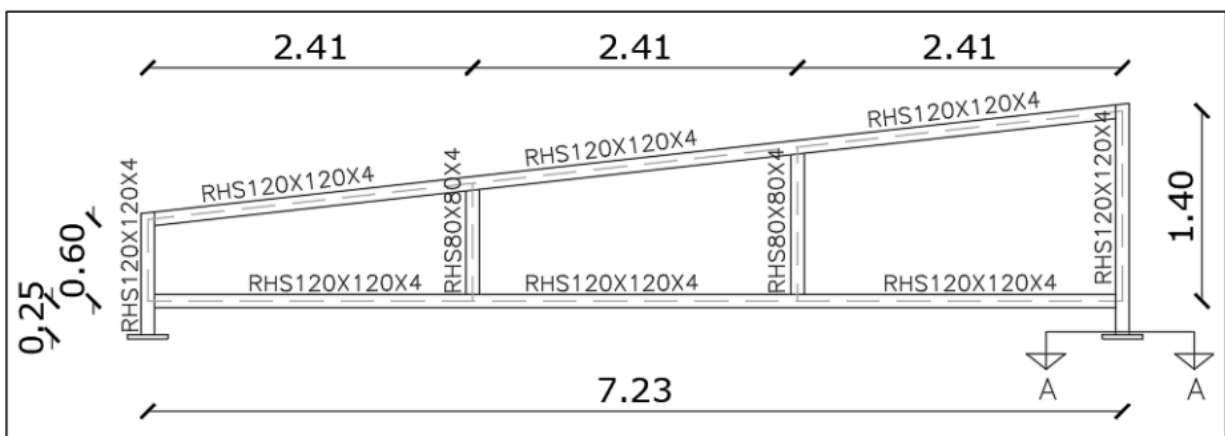
Question 1: Redraw the following footing plan in scale 1:100, and draw section E-E in scale 1:25. Use appropriate layers and sheet size. (Note: dimensions are in cm)



Question 2: The following drawing is a Longitudinal section in a beam using scale 1:20 draw section A-A (cross section). The depth and width of the beam are (25,60) cm respectively with (2 ø10) stirrups . Use appropriate layers and sheet size. (Note: dimensions are in cm)



Question 3: Draw the following steel truss using scale 1:50 using the stated sections, and draw section A-A (base plate) in scale 1:10. The plate have dimensions of 300X300mm and have 4 bolts 18mm diameter, bolts centers located 40mm from each edge from all sides, and plate thickness is 20mm. use appropriate layers and sheet size. (Note: dimensions are in m).



Question 4: Draw the following R.C. slab using scale 1:100 using the stated sections and dimensions, use appropriate layers and sheet size. (Note: dimensions are in m) and (C1 60*25, C2 80*25)cm.

