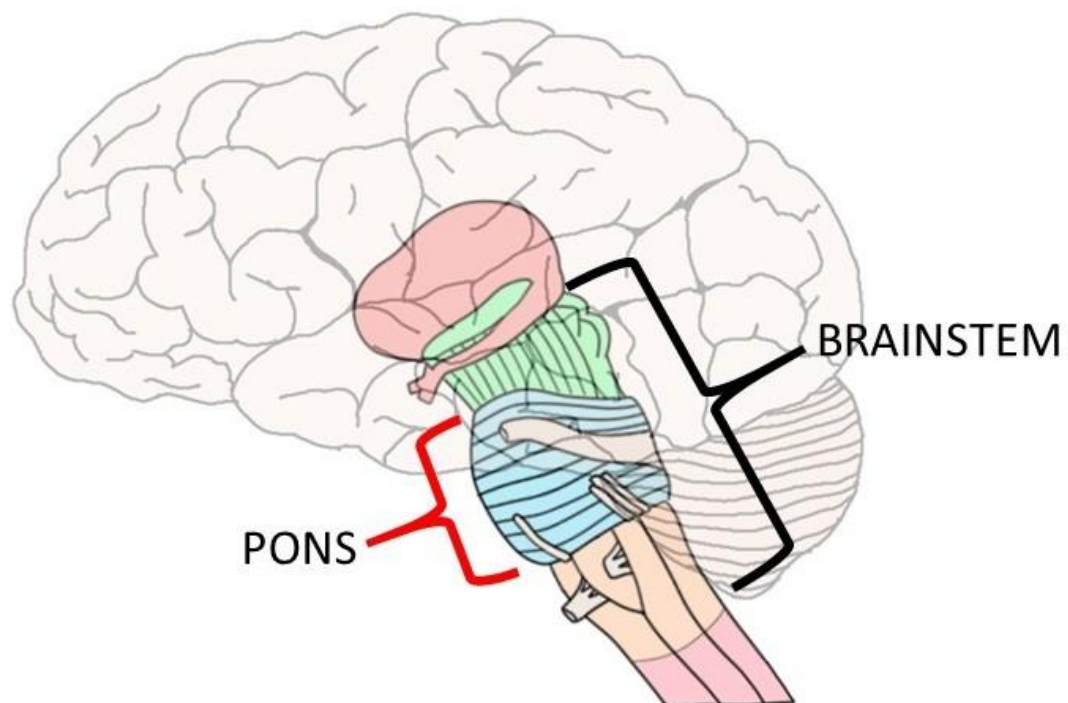
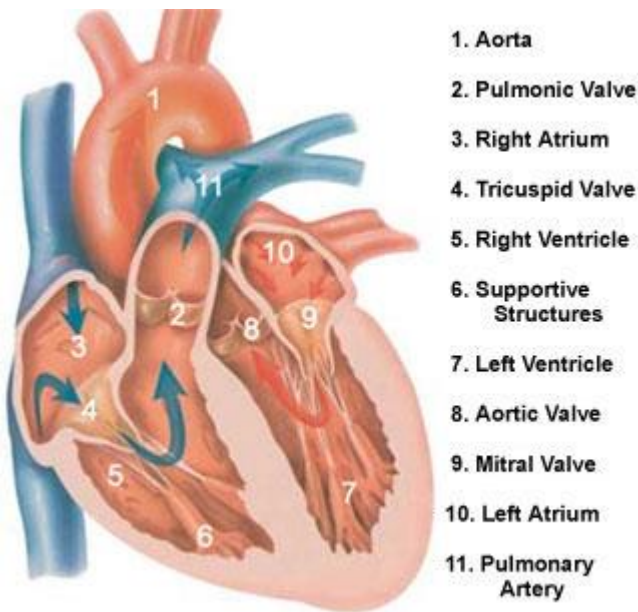


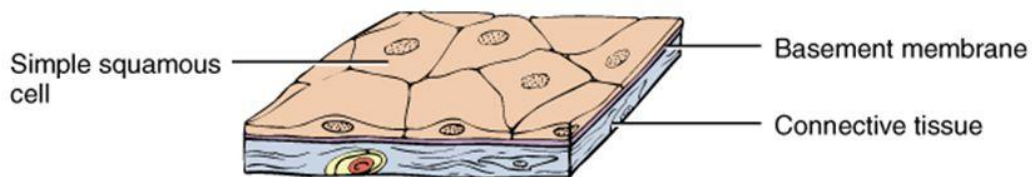
## How is muscular tissue controlled.

- **Cardiac:** Involuntary.
- **Skeletal:** Voluntary.
- **Smooth:** Involuntary.





## Simple Squamous Epithelium

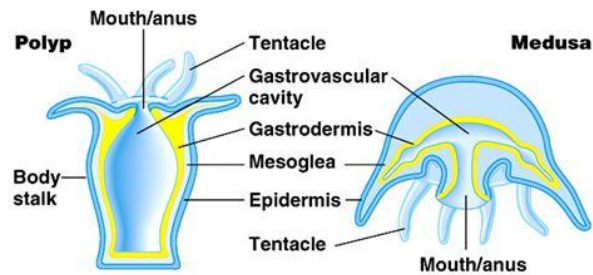


- Single layer of flat cells
  - lines blood vessels (**endothelium**), closed body cavities (**mesothelium**)
  - very thin --- controls diffusion, osmosis and filtration

What is the primary function of this tissue (protection or transport)?  
 (Hint: What is its function as an endothelium,...as mesothelium?)

## 2. Phylum Cnidaria: hydras, jellyfish, sea anemones, and coral animals.

- Diploblastic
- Radial symmetry
- Gastrovascular cavity (sac with a central digestive cavity)
- Nerve net
- Hydrostatic skeleton (fluid held under pressure)
- Polyps and medusa
- Cnidocytes (cells used for defense and prey capture)
- Nematocysts (stinging capsule)



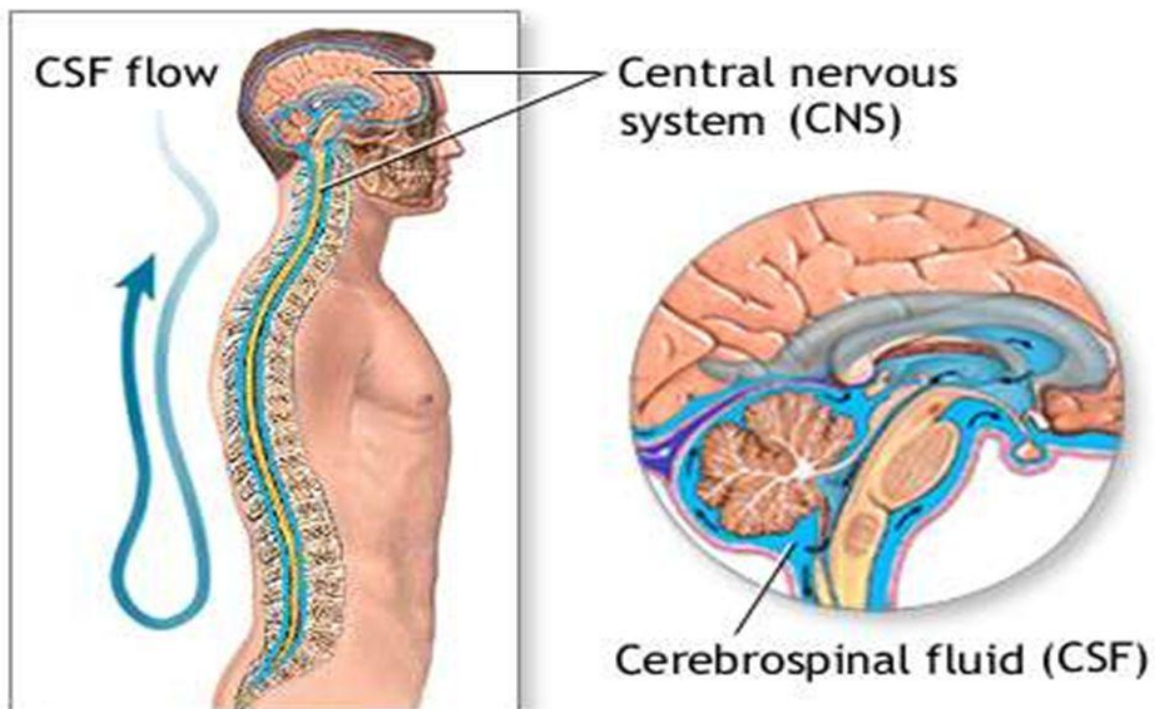
(a) Sea anemone: a polyp



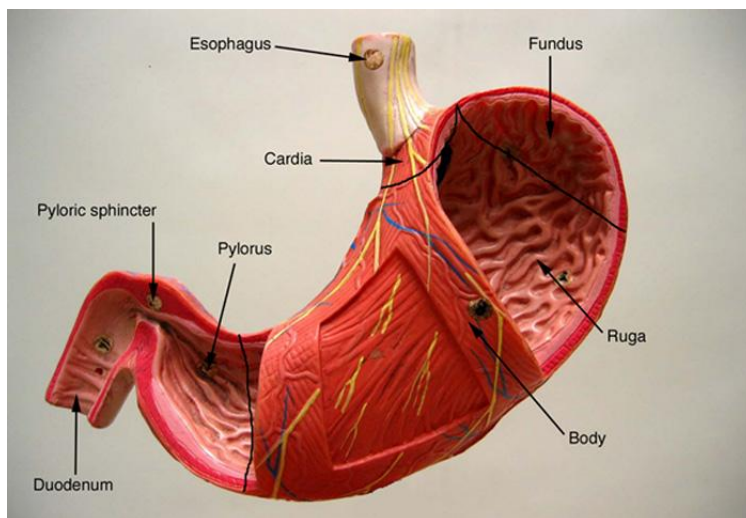
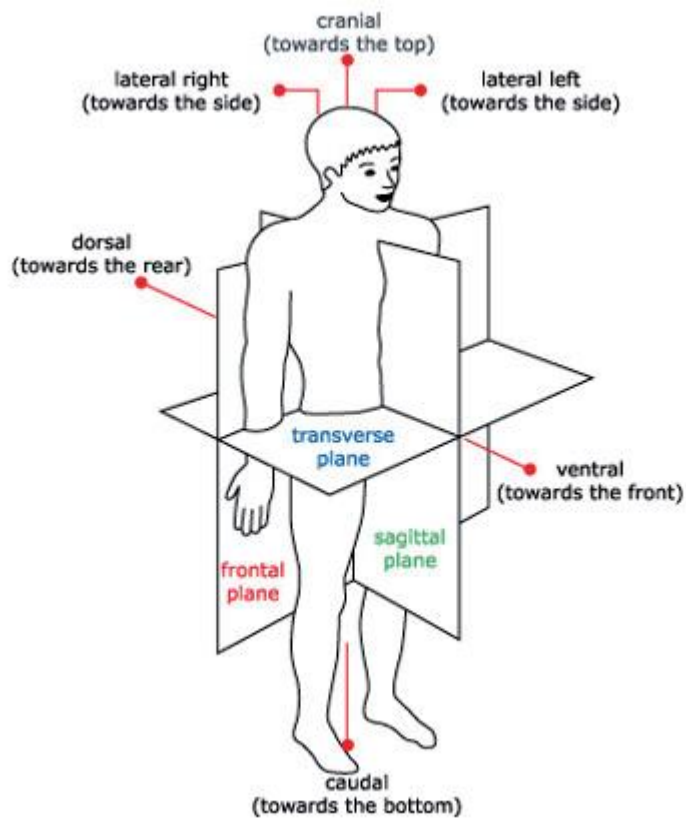
(b) Jelly: a medusa

Copyright © Pearson Education, Inc., publishing as Benjamin Cummings.

## CSF Circulation

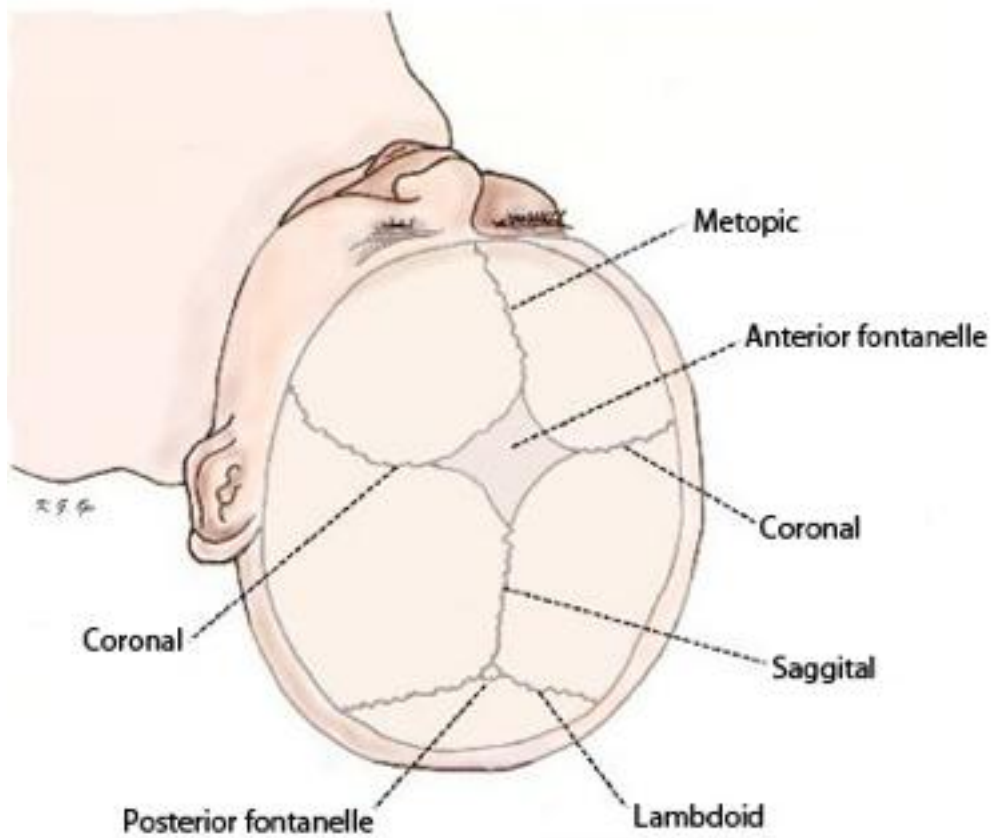






# Cranial Sutures

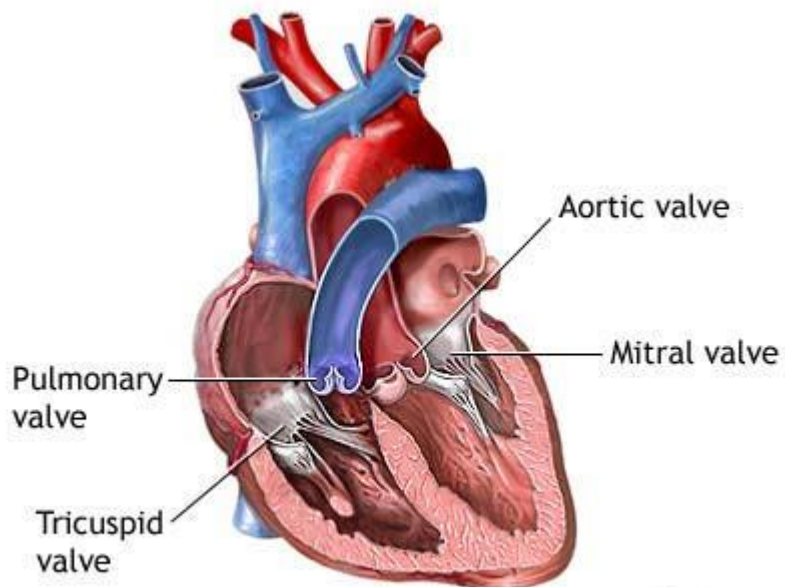
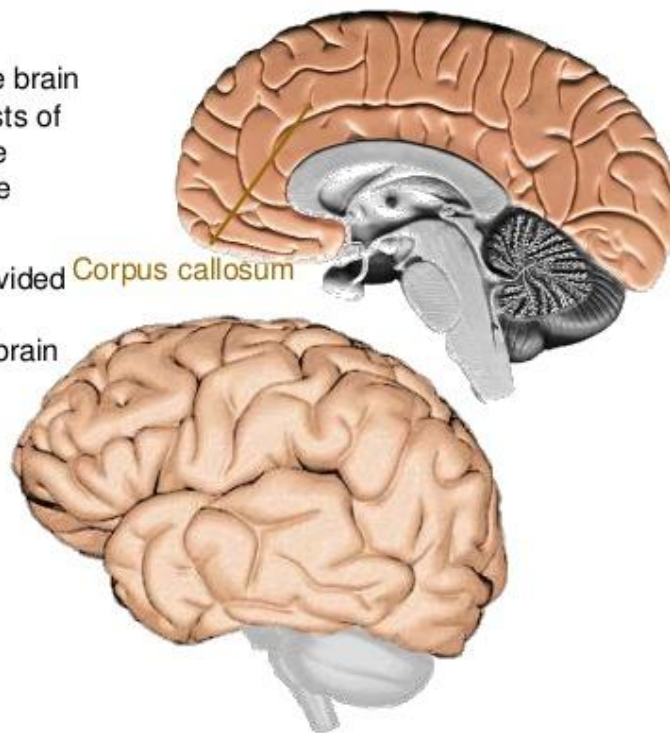
*View from top of head*



# The Cerebrum

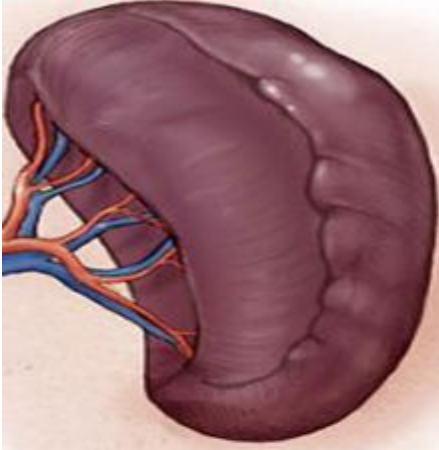
The largest portion of the brain is the cerebrum. It consists of two hemispheres that are connected together at the corpus callosum.

The cerebrum is often divided into five lobes that are responsible for different brain functions.



ADAM.

مثقفون



## الطحال

هل تعلم ؟

وظيفة الطحال هي تهشيم الكرات  
الدموية الحمراء التي اصابها الهرم والعجز  
ويشاركه في هذه  
المهمة الكبد

معاً نرتقي

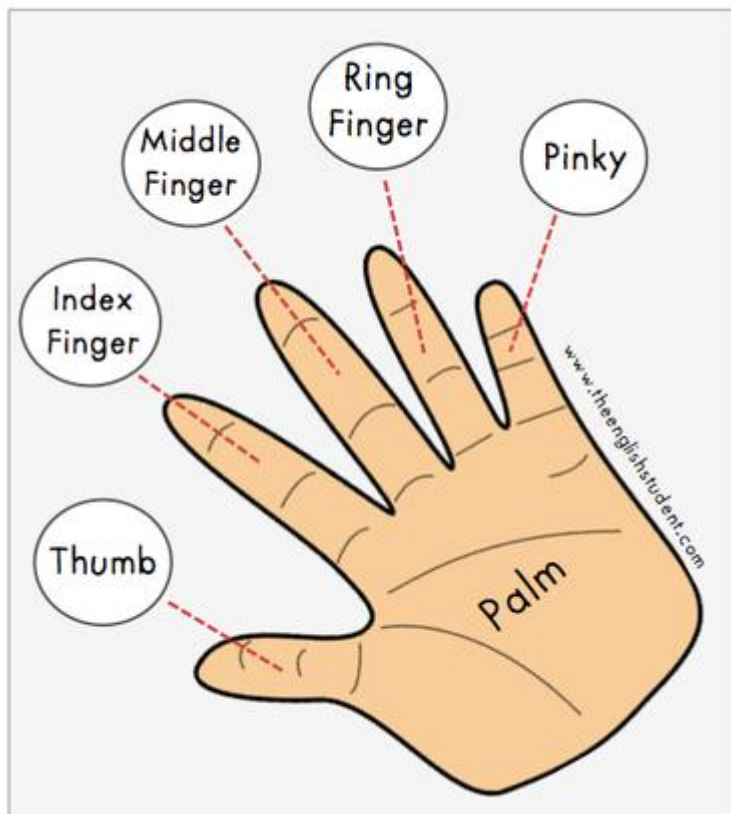
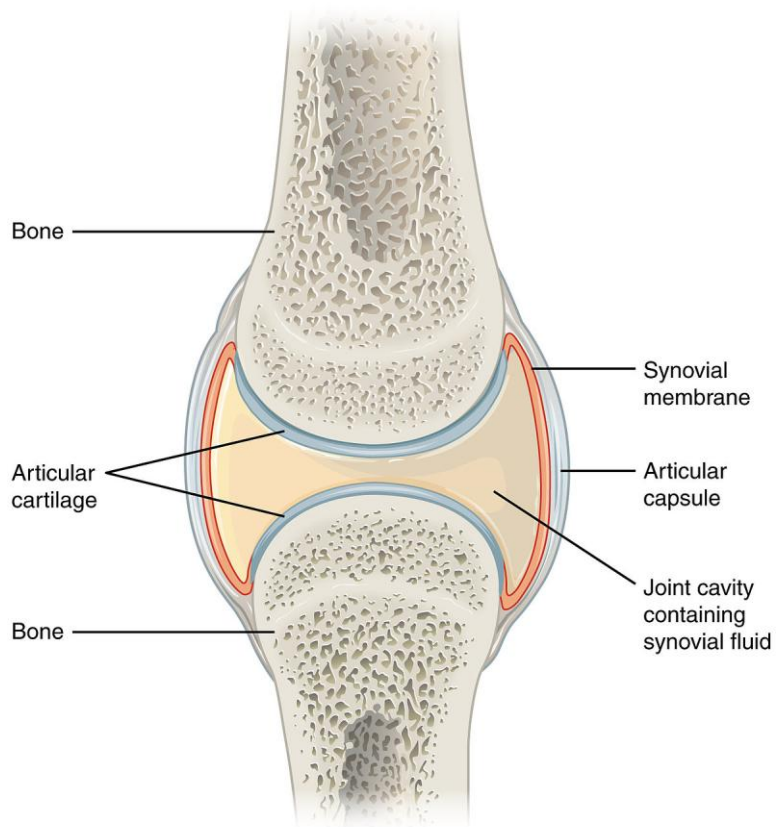


@Mothqafon

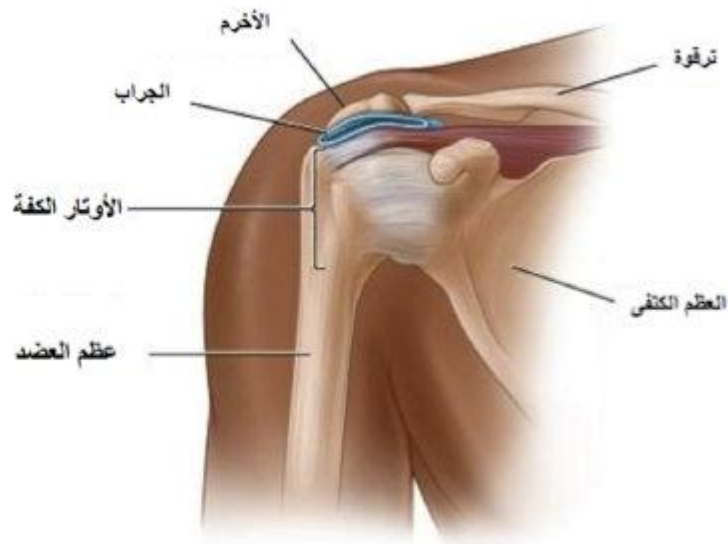


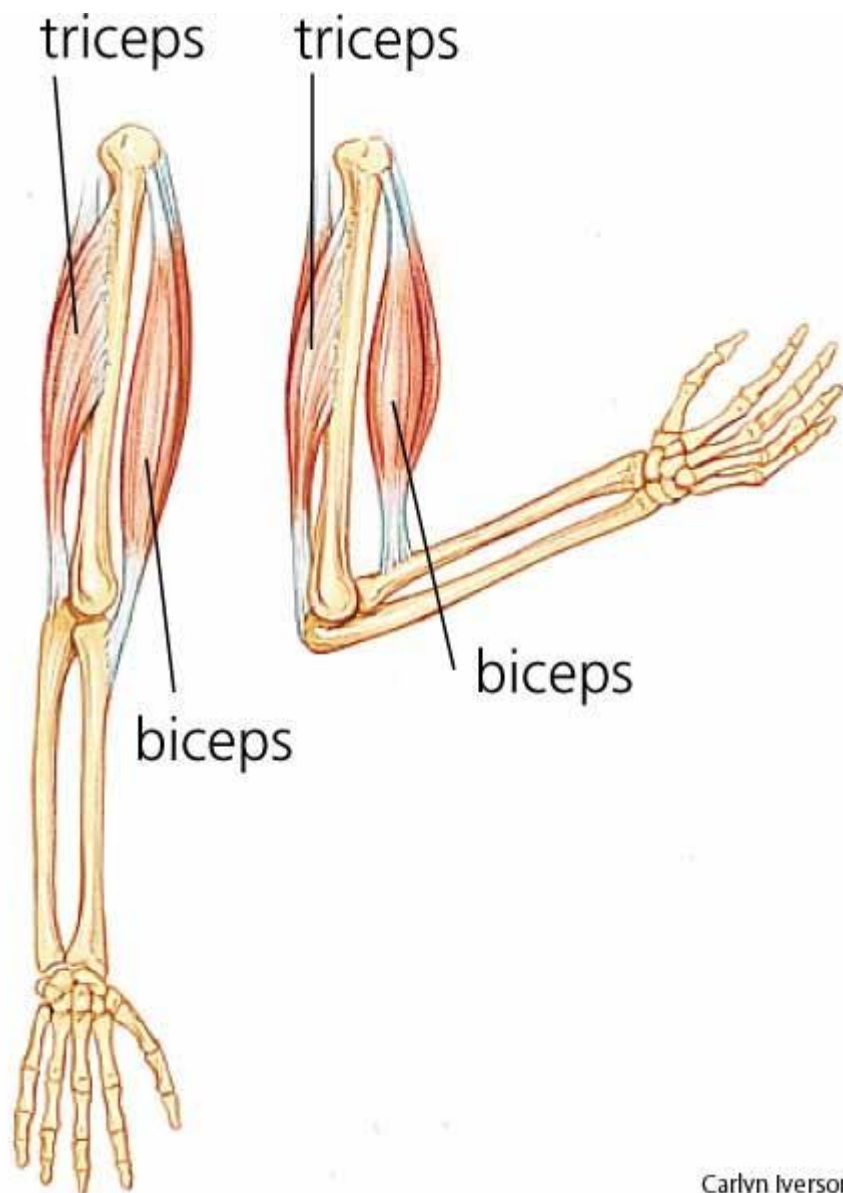
www.Mothqafon.com

مثقفون

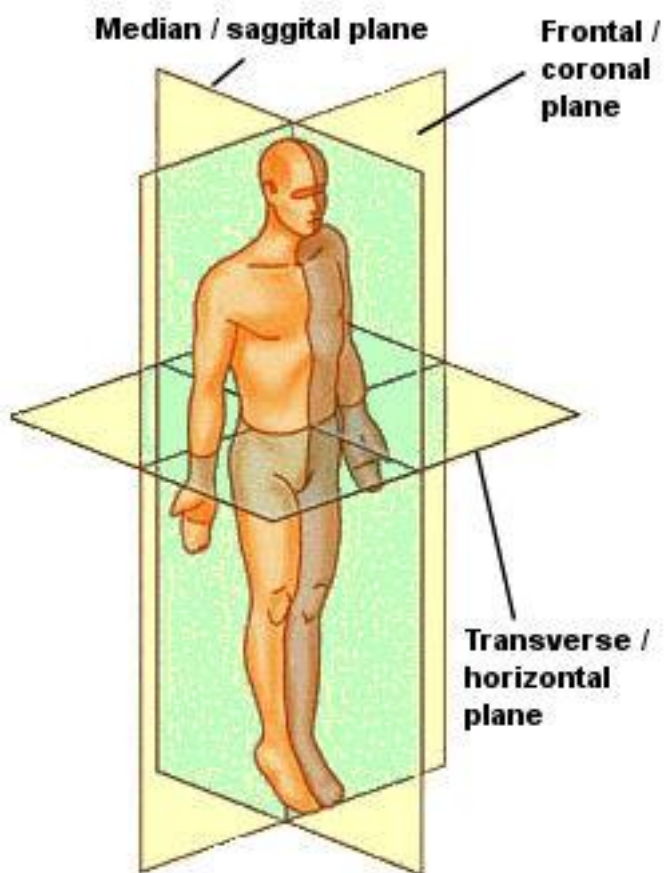
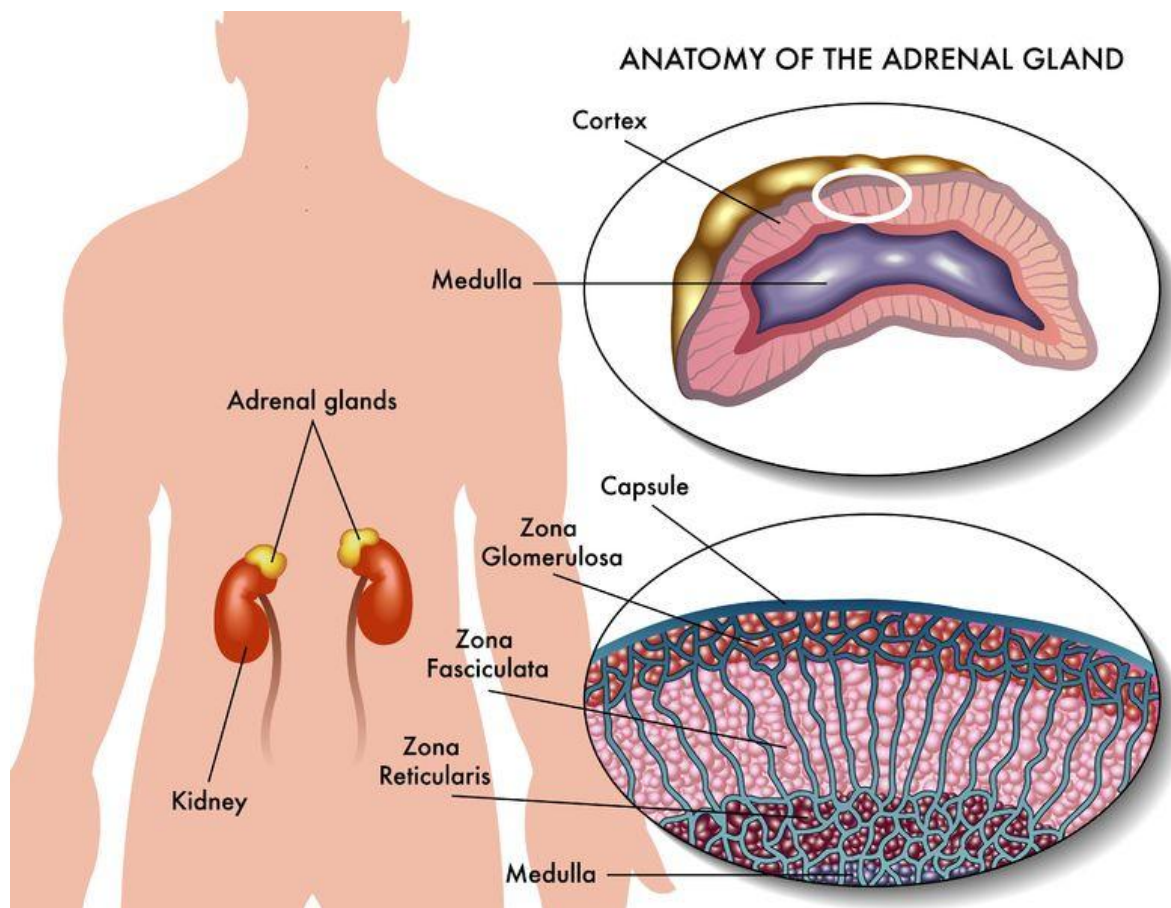








Carlyn Iverson





## Iodine Deficiency Disorders



Goiter

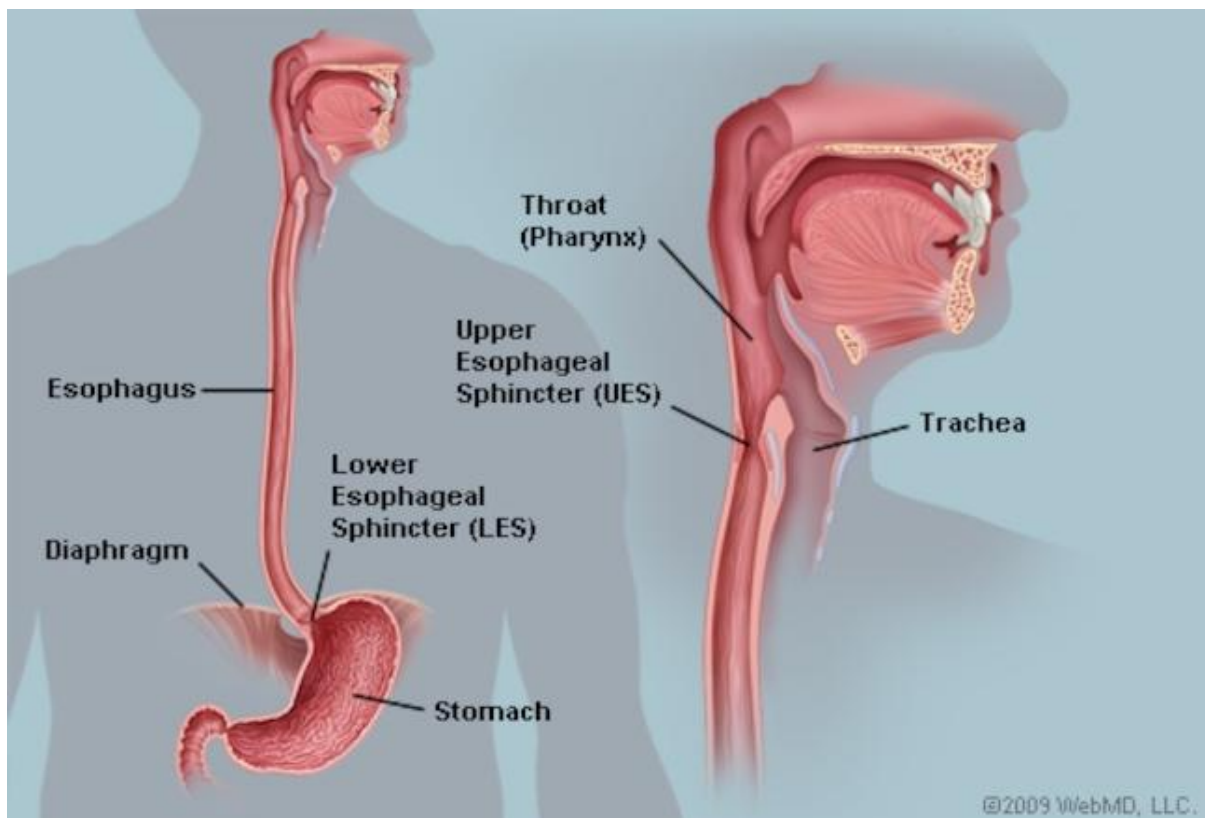
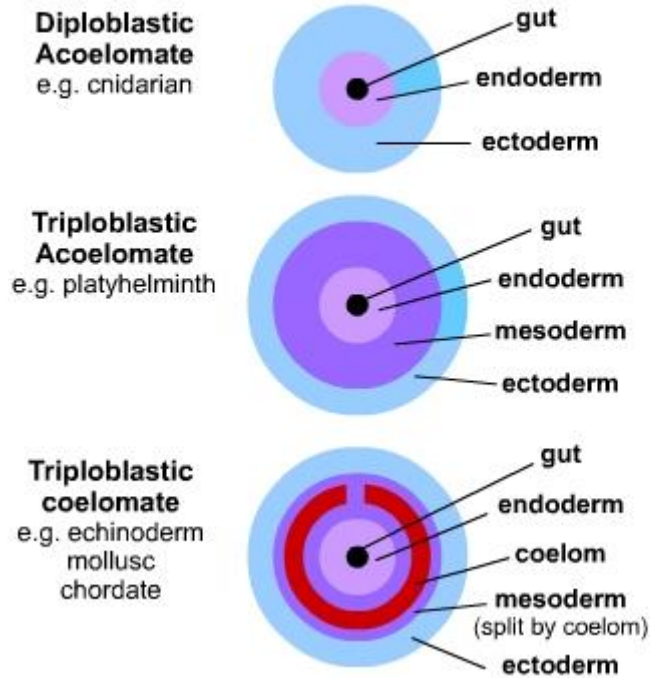


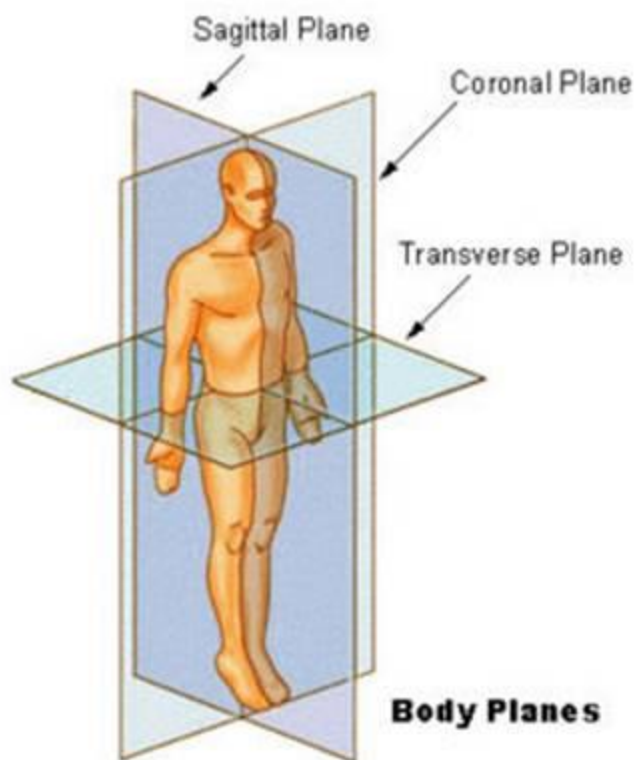
Cretinism



## Classification

### Body plans





## Posterior Thigh Muscles

